
FMS 6.91

Including Accounts Receivable, Budget Planning and Equipment Register

Contents

Introduction.....	2
Modules Included in this Release.....	2
Restoring Databases – FMS and SIMS .net/Personnel 7	2
SIMS Modules and Data	3
Change of Functionality in FMS 6.91	3
Known Issues	3
Additional Information for Workstations Running Microsoft Vista	4
The Borland Database Engine (BDE).....	4
Issues When Running DBAttach	5
Installing FMS 6.91 and Migrating the Database	6
System Requirements.....	6
Hardware Considerations.....	6
Setting Access Rights	6
Documentation.....	6

Please read this release note carefully before installing or upgrading your software. Do not attempt any installation or upgrade without first making a fully restorable, validated backup of your SIMS system.

Introduction

The main purpose of this release is to enable schools to migrate all their FMS data from FMS SQL Anywhere to FMS SQL Server. The migration can only be performed from FMS 6.85 to FMS 6.91. Where Finance Database Selector (FDS) is in use, a migration will need to be performed for each database. All migrations need to be completed by August 2008 when our support for FMS SQL Anywhere will cease.

New functionality will only be included in FMS SQL Server, which includes the Consistent Finance Reporting (CFR) changes for the financial year 2007/2008. DCSF are currently consulting about the CFR changes for 2007/2008 and we will advise at a later date when these will be introduced into FMS.

Once this release is available, FMS support will be provided from the FMS 6.82 (2006 November) release onwards.

Modules Included in this Release

- FMS 6.91
- Accounts Receivable 6.91
- Budget Planning 6.91
- Equipment Register 6.91
- Finance Integrator 6.91
- Finance Database Selector (FDS) 6.91
- Finance Integrator 6.91
- Migration Utility

Restoring Databases – FMS and SIMS .net/Personnel 7

If you are using Personnel 7.86 or later to generate Salary Projections in FMS and you need to restore your SIMS .net database, you **must** restore your FMS system to the same point. This will ensure that Salary Projections are calculated accurately and consistently. It is recommended that a backup of both databases is always taken at the same time to facilitate this.

SIMS Modules and Data

Finance Integrator retrieves contractual data required by FMS from Personnel 5.10. When you have converted to Personnel 7.86 or later, in order to allow for Rooms, Students and Personnel Details (contractual details from Personnel 7) to be available in FMS, the location of CommandPulsar must be defined in **Tools | STAR 7 Settings** in FMS.

NOTE: SIMS .net must be installed in the same location on each workstation where FMS will be used to generate Salary Projections from contracts held in Personnel 7.

*A user entitled **DataExportsUser** must exist in System Manager for staff details to be available in FMS.*

Change of Functionality in FMS 6.91

Reports

The following reports have been resequenced so that the data is presented in a more structured manner.

Report Menu Route	Revised Format
Reports Accounts Payable Purchase Order Reports Cost Centre Commitments – Detailed reports	Ascending Cost Centre Code order
Reports Accounts Payable Purchase Order Reports Cost Centre Commitments – Summary report	Ascending Cost Centre Code order
Reports General Ledger Balances/Reserves report	Ascending Source Order

Reports that are generated with the same report criteria at FMS 6.85 and FMS 6.91 will contain the same contents. However, some 6.91 reports will display the data in a more structured manner, i.e. ascending numeric order. This is due to the manner in which SQL Server holds and displays data.

Adding Suppliers and Debtors with Similar Names

When adding a new debtor, supplier or fields within an address then tabbing out of the field, FMS 6.91 will perform checks in a slightly different manner for 'similar' sounding suppliers/debtors that already exist in FMS. Suppliers with similar names will be displayed in a window. If you are confident that you are not duplicating an existing supplier/debtor, click the **OK** button and the new record will be saved. This extra confirmation window appears due to the improved manner in which SQL Server 2005 handles the 'sounds like' functionality.

Known Issues

Accessing both 6.91 and 6.85 for verification purposes

To be able to access both 6.85 and 6.91 at the same time, you must launch 6.85 first. If you launch 6.91 first, you will be unable to launch 6.85.

Help Files

If you try and access the help file when both 6.91 and 6.85 are open, an error message will be displayed. Closing 6.85 will allow the help file to be displayed.

Additional Information for Workstations Running Microsoft Vista

This section details activities required on workstations running Microsoft Vista in order to be able to run FMS.

Installing the NETUI2.DLL

When running FMS on a workstation where Microsoft Vista has been installed, you may receive the following message "XP Machine- Server Client - This application has failed to start because netui2.dll was not found. Reinstalling the application may fix this problem".

The required files to resolve this issue can be downloaded from:

<http://dl.capitasolus.co.uk/utilities/FMSVistaFix001.zip>

Once downloaded and saved, unzip the file and click on the FMSVistaFix001.exe to install the files.

The Borland Database Engine (BDE)

The Borland Database Engine (required for FMS) will not run unless two settings have been changed:

1. Permission must be given in the Windows Registry Database.
2. NET DIR must be moved using Borlands BDE Administrator.

Both actions must be carried out in the described order.

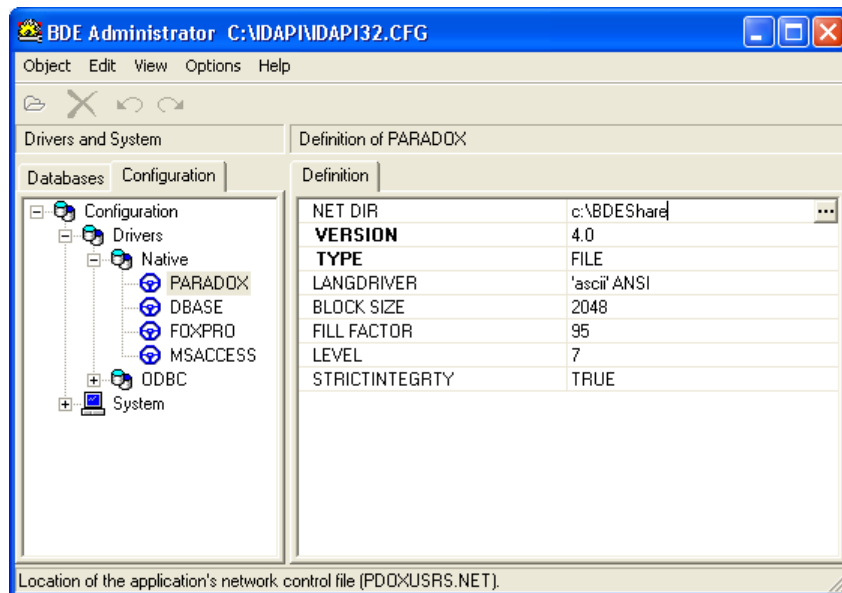
Giving Appropriate Permissions

1. Log in as Administrator.
2. Select **Start** | **Run** and enter **regedit** to open the **Registry Editor**.
3. Expand the HKEY_LOCAL_MACHINE tree.
4. Expand the SOFTWARE branch.
5. Right-click on **Borland** and select **Permissions** from the drop-down list.
6. Highlight **Users**.
7. Select **Full Control** and click the **OK** button.
8. Exit the **Registry Editor** window.

Moving the NET DIR Location

In the BDE, sharing of data among more than one workstation is controlled by the `Pdoxusrs.net` file. The location of this file is important as all workstations operating on the same data must refer to the same file. The default setting is in the root file of the `C:` drive, which will fail under Vista as this does not allow new files to be created here. Instead, a new folder needs to be created on the drive and the file can be stored here.

1. Create a new folder in `C:`, e.g. `C:\BDEShare`, and copy the `Pdoxusrs.net` file into it.
2. Open the **Windows Control Panel** from the **Start** menu.
3. Double-click on **BDE Administrator** to open the **BDE Administrator** dialog.
4. Select the **Configuration** tab.



5. Expand the **Configuration** tree, then the **Drivers** tree, then the **Native** tree.
6. Highlight PARADOX and edit the NET DIR setting. Enter the path of the newly created folder, e.g. `C:\BDEShare`.
7. Close the **BDE Administrator** window.

Issues When Running DBAttach

When running DBAttach on Vista, it has to be run as Administrator. Otherwise, the following error message will be displayed when attempting to attach a database:

An unhandled exception has occurred in your application. If you click continue, the application will ignore this error and attempt to continue. If you quit, the application will be shut down immediately. Access to the path "C:\Program Files\Microsoft SQL Server\MSSQL.1\DATA\ccsfms.mdf" is denied.

1. Select **Start | All Programs | SIMS Applications**.
2. Right-click on **DBAttach** and select **Run As Administrator** from the drop-down list.

The shortcut to DBAttach can be set up to permanently run as Administrator, if preferred.

1. Select **Start | All Programs | SIMS Applications**.
2. Right-click on **DBAttach** and select **Properties** from the drop-down list.
3. In the **DBAttach Properties** dialog, select the **Compatibility** tab.
4. Select the **Run the Program as Administrator** check box.
5. Click the **Apply** button then the **OK** button.

Installing FMS 6.91 and Migrating the Database

Full instructions on installing FMS 6.91 and migrating your data are available from the *FMS 6.91 Installation and Migration Guide* (FMS691_Installation_Guide.PDF) which is available from SOLUS.

IMPORTANT NOTE: *FMS 6.91 should be run on SQL Server 2005 Service Pack 2 or SQL Server Express Service Pack 2.*

System Requirements

Hardware Considerations

NOTE: Before upgrading to this release, it is strongly recommended that you refer to the recommended hardware requirements.

The current hardware specification takes into account the latest advice from Microsoft® and is based on the recommended specification to run SQL based software.

Details of recommended hardware and specifications for new equipment required for running your SIMS system effectively can be found on the Capita Children's Services Internet site:

<http://www.sims.co.uk/hardware>

Setting Access Rights

Before you begin using FMS 6.91, you will need to set up Users IDs and passwords for your users. Please refer to the *FMS 6.91 Installation and Migration Guide*.

Documentation

An electronic version of all the handbooks (.PDF files) associated with this release can be obtained:

- From the FMSINDEX.PDF in the folder where FMS is installed.
- By downloading the file from our SupportNet web site: <http://support.capitaes.co.uk>.

- Through Windows Explorer, by opening the relevant file located in the \SIMS folder on your machine.
- By emailing publications@capita.co.uk and requesting the required handbook.

You can also access handbooks from the **Contents** page of the Finance help file while running FMS.

Handbooks provided with this release are as follows:

- SIMS Getting Started with FMS 6.91 (GSFIN.PDF)
- SIMS Accounts Payable in FMS 6.91 (ACCPAY.PDF)
- SIMS eProcurement in FMS 6.91 (EPROC.PDF)
- SIMS Central Processing and Non-Invoiced Income in FMS 6.91 (CPANDNI.PDF)
- SIMS General Ledger in FMS 6.91 (GLEDGER.PDF)
- SIMS Budget Management and Personnel Links in FMS 6.91 (BMANDPL.PDF)
- SIMS Year End Procedures and Additional Information in FMS 6.91 (FINYEAR.PDF)
- SIMS Consistent Financial Reporting in FMS 6.91 (CFR.PDF)
- SIMS Accounts Receivable 6.91 (ARW.PDF)
- SIMS Budget Planning 6.91 (BUDPLAN.PDF)
- SIMS Equipment Register 6.91 (ERW.PDF)
- SIMS Finance Integrator 6.91 (INTEGRAT.PDF)

Handbooks are viewed and printed using Adobe Acrobat Reader.